



## PhotoPRINT SE™

### Intuitive & Powerful

The user interface is long renowned for its ease-of-use.

Configure as a foreground or background seamless RIP.

View all information about the jobs in progress, at a glance.

### Recommended Software Requirements

Windows Server 2003, XP, Vista

1 Gb RAM or higher

200+ Mb Install space

4+ Gb Working space

16-bit 1024x768 video

DVD drive

Available USB port for key

Broadband Internet connection recommended

Internet connection required

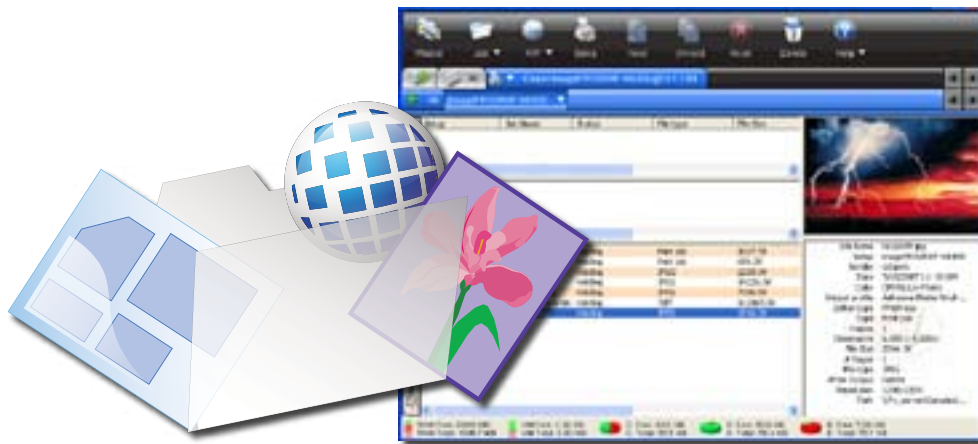
Available port connection for each output device

### The Next Step

Upgrade an older version of PhotoPRINT SE.

Flexibility to upgrade in the future to PhotoPRINT DX, SERVER or SERVER-PRO.

This is the RIP solution with all the fundamentals needed for a single-workstation environment. Send jobs to RIP and print directly from popular design applications such as Adobe Photoshop® and Illustrator®, QuarkXPress®, CorelDRAW®, and CAD/AEC/GIS engineering solutions.



## Is PhotoPRINT SE Right for You?

### Benefits

- Ideal for smaller production environments with a single design station and a single wide-format printer.
- Pantone™ Library and Custom Color Mapping allow you to easily and precisely specify output colors and effortlessly reproduce them again and again.
- Drag and Drop TIFFs, JPEGs and PDFs directly into the queue.
- Output controls make it simple to Scale, Rotate, Copy, and Mirror individual jobs.
- Control your final output with specific ICC profiles for your printer, ink and media.
- Update this software RIP with new drivers and profiles from our website.
- Simple and logical user interface means little training and a short learning curve.
- Separate Rendering Intents for Vector, Bitmap, Text and Gradient for the most accurate composite graphics.
- Freedom of growth to additional powerful productivity tools in other PhotoPRINT Family Package levels.

### Features

- Configure printer and cutter setups for out of the box production for over 1000 devices.
- More than 400 ICC Output Profiles are included to give you the results you want.
- Color Profiler for editing existing ICC Output Profiles.

### Adobe® RIP Engine

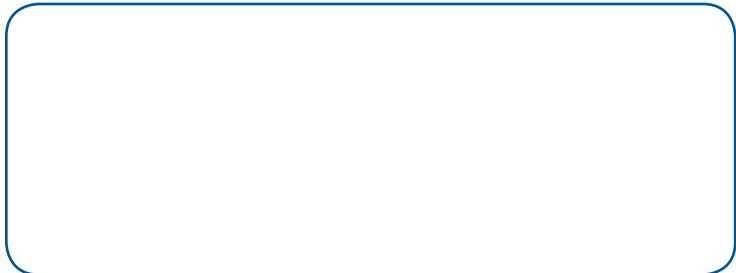
PhotoPRINT is the only solution on the market that seamlessly integrates the latest genuine Adobe RIP Engine, guaranteeing accuracy, reliability and compatibility.





TOP 30 FEATURES		PhotoPRINT SERVER-PRO	PhotoPRINT SERVER	PhotoPRINT DX	PhotoPRINT SE
<b>CLIENT</b>					
Print Jobs from any Application	Improved	Improved			Improved
Receive Jobs from a Network Environment	✓	✓			
<b>JOB CONTROL</b>					
Dual Roll Printing	New	New			
Job Filtering	New	New	New		
Job Estimation	New	New			
TWAIN (scan directly to queue)	New	New	New		
Repeat Job	New	New	New		Optional
Print Wizard	New	New	New		New
Job Nesting: Manual & Automatic	Improved	Improved			
Manual Editing of Nested Jobs	Improved	Improved			
Presets: Import, Save, Apply & Export	Improved	Improved	Improved		Improved
<b>RIP</b>					
Adobe® PostScript® 3	✓	✓	✓		✓
Contour Cut to Hybrid Printer/Cutter	✓	✓	✓		✓
Contour Cut to Virtual Hybrid Printer/Cutter	✓	✓	✓		
Simultaneous Output Threads	3	3	2		1
CMYK & Spot Color Separations	✓	✓	✓		
<b>COLOR MANAGEMENT</b>					
CMYK +(RGB, RB, OG)	Improved	Improved	Improved		Improved
ICC Profile Editing	Improved	Improved	Improved		Improved
ICC Profile Creation	✓				
Utilize 3rd Party ICC Output Profiles	✓	✓	✓		✓
Object Color Control	Improved	Improved			
Global Color Mapping with Pantone® Library	✓	✓	✓		✓
Custom Color Mapping	Improved	Improved			
Printer Simulation	✓	✓			
<b>DESIGN</b>					
Text Creation & Editing	✓		✓		
Make Transparent Bitmap	New		New		
Contour Cut Creation & Editing	✓		✓		
Auto Serialization (Variable Data)	✓		Optional		
Templates: Apply, Create, & Edit	✓		Optional		

**FOR MORE INFORMATION AND TO REQUEST A DEMONSTRATION, PLEASE CONTACT:**



**POWERED BY**



PhotoPRINT is a registered trademark of SAI;  
 Adobe and PostScript are registered trademarks of Adobe Systems, Inc.;  
 Pantone and other Pantone, Inc. trademarks are the property of Pantone, Inc.;  
 ColorLogic is a registered trademark of ColorLogic GmbH.  
 All other trademarks are the property of their respective owners.  
 ©2007 SAI. All rights reserved.  
 Specifications subject to change without notice.



www.SAintl.biz

SAI International

International Plaza Two, Suite 625 Philadelphia, PA 19113-1518 USA  
 Toll Free: 800-229-9068 Tel: 610-521-6300 Fax: 610-521-0111  
 Email: info@SAintl.biz

SAI Europe

Minervastraat 14 bis B-1930 Zaventem, Belgium Tel: +32-2-725-5295 Fax: +32-2-725-2809  
 Email: info@SAintl.biz